



The Manchester Stock Exchange was built between 1904 and 1906, on a design by “Bradshaw, Gass and Hope” and was opened ceremoniously on 13th December 1906.

The exquisite example of Edwardian Baroque architecture was purpose built as a symbol of confidence in the future of a growing Manchester, which at the time was the 9th most populous city in the world.

Stock Exchange, launched as a boutique 5 star hotel, on 15th November 2019, and, paying homage to it's rich history, the Grade II listed building, has been lovingly restored, retaining much of it's original features, whilst introducing a wealth of understated luxury and style. Since the opening, the hotel has been awarded a number of accolades, including “Best Hotel in Manchester” during the “This is MCR Awards in 2022”, Ranked No 13 in the Trip Advisor Top 25 Travellers Choice Awards 23, and No 1 ranking on Trip Advisor Manchester.



“ When you hear Alan, John and David talk and share the memories they have of the building, you realise how important it was to them and what an impact it had on people in Manchester. The stories of boom and busts, of playing cricket and football on the trading room floor, the different characters that worked there and how they all felt when it closed. When we heard these things, we became even more determined to bring the building back to life and share the stories that it has to tell.”

Gary Neville



Manchester Venues

1. Manchester AO
2. The Bridgewater Hall
3. Etihad Stadium
4. Co-op Live Arena
5. Old Trafford Stadium
6. Manchester Cathedral
7. Lancashire County Cricket Club
8. Manchester Academy
9. 02 Apollo
10. Halle Ancoats
11. BBC/Media City
12. Factory International
13. Castlefield Bowl
14. Victoria Warehouse
15. Ritz
16. Gorilla
17. Deaf Institute

Venues in The North

- Liverpool M&S Bank Arena
- Liverpool FC Stadium
- Sheffield FlyDSA Arena
- Leeds First Direct Arena
- Bolton Stadium
- Goodison Park
- Anfield



THE PERFECT BASE FOR VIP GROUPS IN THE NORTH WEST

Situated in the heart of Manchester, Stock Exchange Hotel benefits from being in a prime location to experience all that the city has to offer on foot, whilst also being a short distance from all of the major entertainment venues, both indoor and outdoor.

Even though it has a central location, the design and layout of the building lends itself to total privacy and exclusivity for any guests that would be staying with us.



THE PERFECT BASE FOR VIP GROUPS IN THE NORTH WEST

Due to the number of high capacity stadium venues within the North, Manchester is ideally located to be a central base from which all four major cities are easily commutable. This would provide the artist or band with an opportunity to recharge & relax, rather than experiencing unnecessary travel within a relatively small area.

Newcastle

Leeds

Sheffield

Liverpool



Birmingham





METICULOUS SERVICE IN BEAUTIFULLY RESTORED SURROUNDINGS

With a dedicated team, delivering meticulous service, Stock Exchange Hotel is the perfect accommodation base for your VIP clients.

- A private entrance to the hotel for any VIPs
- Secure floors, only accessible by designated guests/ personnel
 - Exclusivity of bedroom floors
 - Flexible corridor lock off
 - Private dining facilities
- Signature Suite options with private entrance and steam shower
 - Free WiFi throughout the hotel
- Ample room for drop off and pick up for a tour bus or private vehicle
 - 24 hour room service available upon request
 - 24 Hr Dedicated Reception Team
 - Humidifier & Dehumidifiers (On Request)



EXCLUSIVE USE AT STOCK EXCHANGE HOTEL

We are proud to be one of the few hotels in Manchester able to offer exclusive use of our entire property, a highly sought-after option among VIP groups and international artists, who consistently share exceptional feedback.



WHAT'S INCLUDED

All 40 Bedrooms, including:

/Signature suites: The House, The Bank, Goldstone Suite
/5 x Norfolk rooms with private terraces
/6 x Bradshaw's rooms
/18 x Arthur Hope rooms
/8 x John Gass rooms

Private Use of All Hotel Spaces:

/Traders lounge
/Drawing room
/Tender restaurant
/The bank (private dining or event space)

Additional Inclusions:

/15 x On-site car parking spaces
/Private entrance
/Private chef (on request)
/Full security
/ Dedicated group manager for the duration of the stay

This offering ensures total privacy, luxury, and a truly bespoke experience. Please let us know if you'd like further details or to arrange a private tour.



ACCOMMODATION

A collection of forty rooms, signature suites and a stunning top floor residence have been thoughtfully considered and designed with the absolute comfort of our guests in mind.

Our rooms, suites and residence can be arranged into a number of configurations, creating interconnected spaces that are ideal for families or large groups travelling together. Exclusive use bookings are available and are curated on an individual bespoke basis.



RESIDENCE

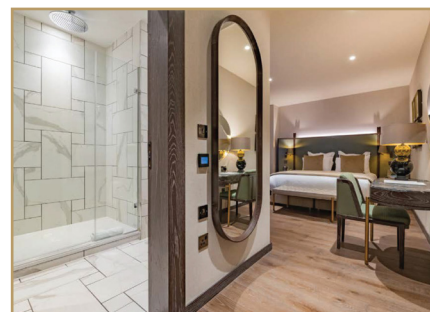


THE HOUSE

The House is an exclusive, fully serviced residence, with its own roof terrace offering views over and across the Manchester skyline. We offer short and long term residence options.



SIGNATURE SUITES



THE GOLDSTONE SUITE

The Goldstone Suite offers a warm and inviting contemporary space.



THE BOARDROOM SUITE

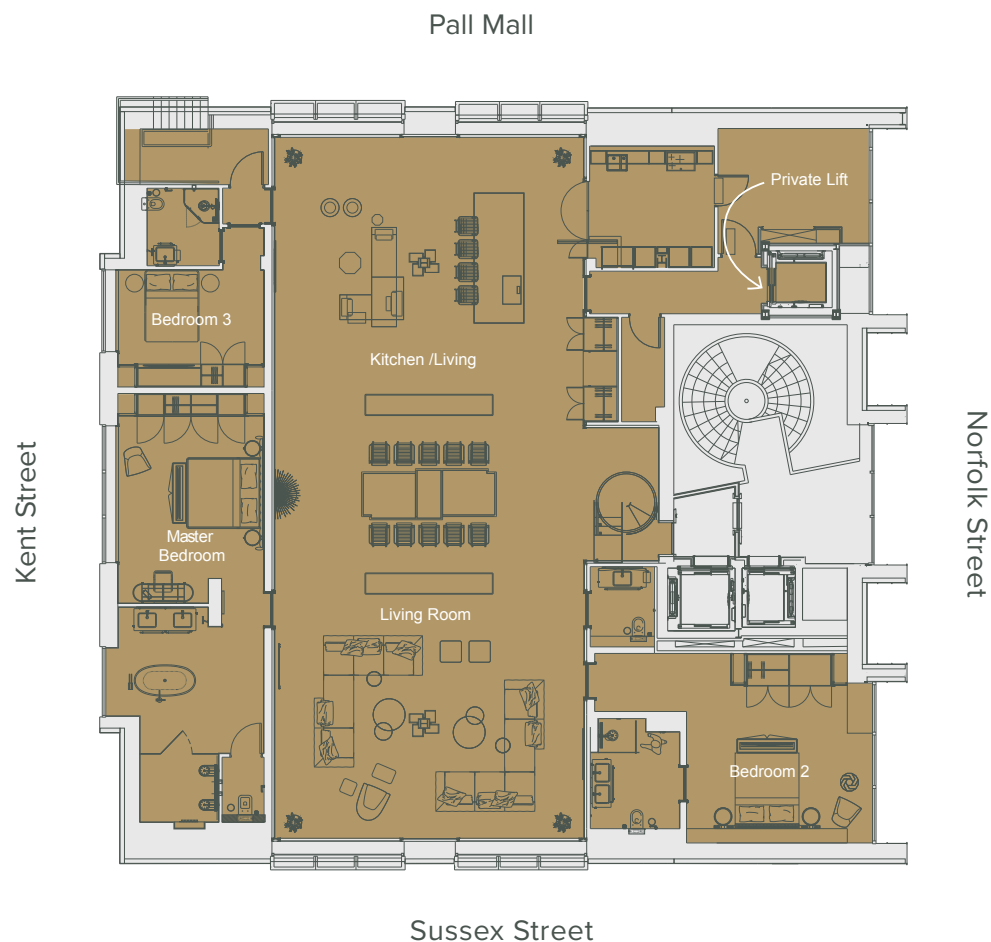
Formerly the boardroom of the Manchester Stock Exchange.



THE HOUSE

- / Size – 346m²
- / Three Bedrooms all with En suite
- / Two Separate living areas
- / Kitchen (with Hotel service access)
- / Large Dining area
- / Dedicated personal concierge*
- / Private chauffeur*
- / Private chef*
- / 24 Hour access
- / Chauffeur on demand
- / Hotel credit facilities

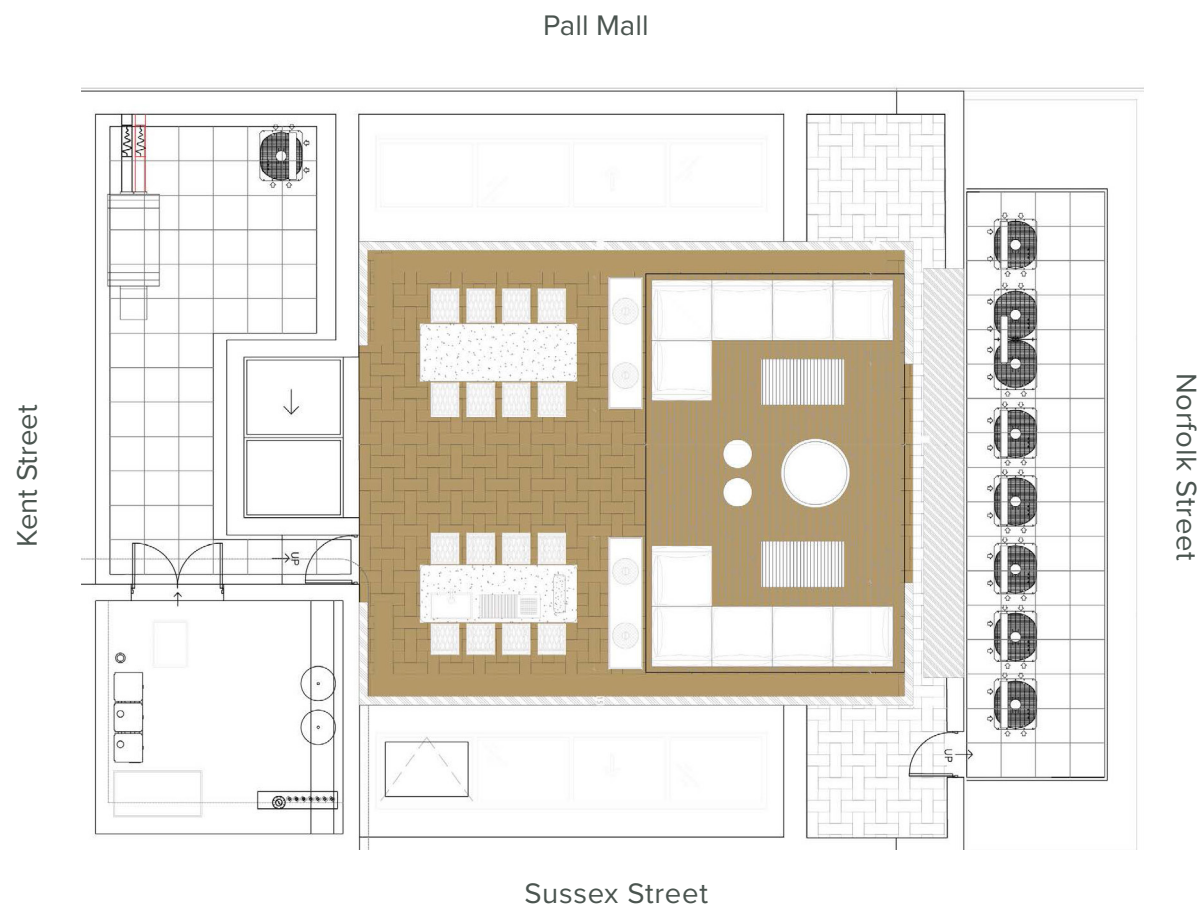
*On Request





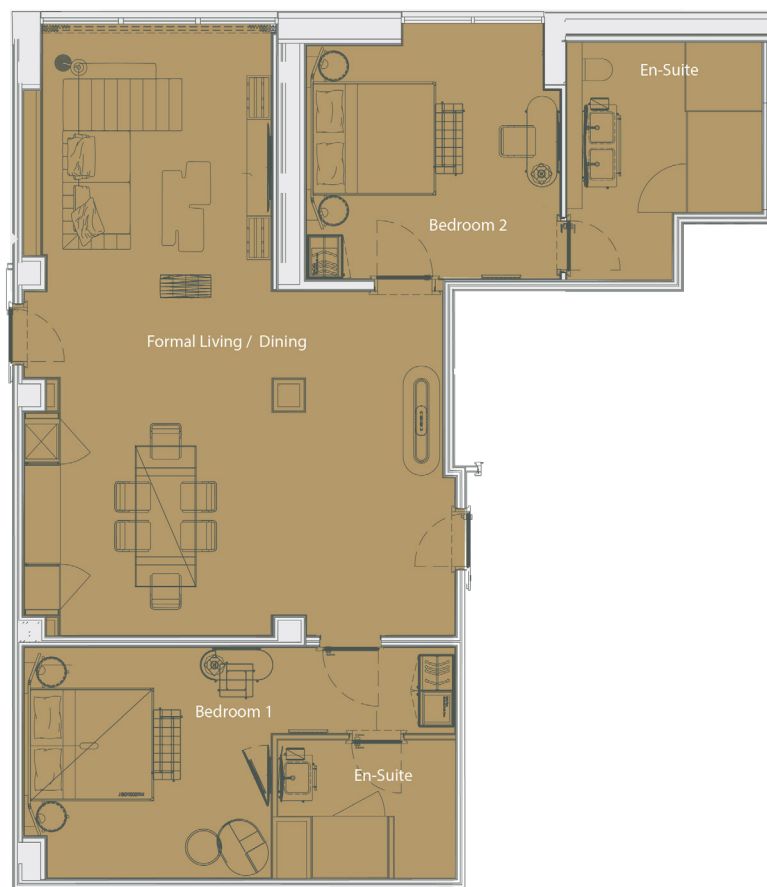
THE HOUSE ROOFTOP

- / Private rooftop garden (50m2)
- / City Views
- / Out Door furniture
- / Seating area's



Sussex Street

Kent Street



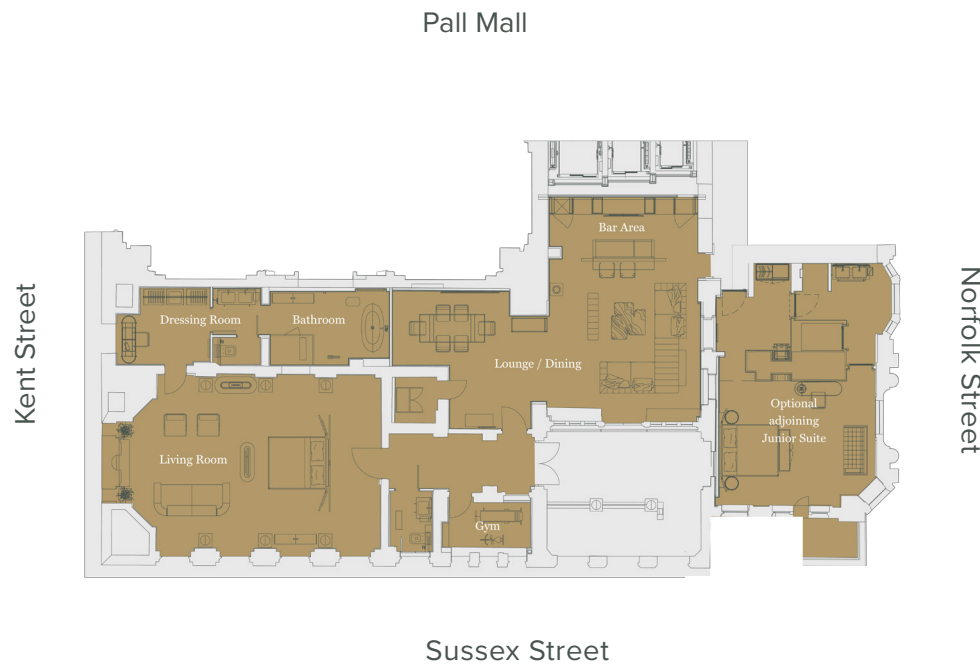
Norfolk Street

Pall Mall



THE GOLDSTONE SUITE

- / Size – 106m²
- / Two King-size beds
- / Separate living area
- / Kitchenette and dining area
- / Location – The newly-built 4th Floor
- / En suite-bathrooms with walk-in shower



THE BOARDROOM SUITE

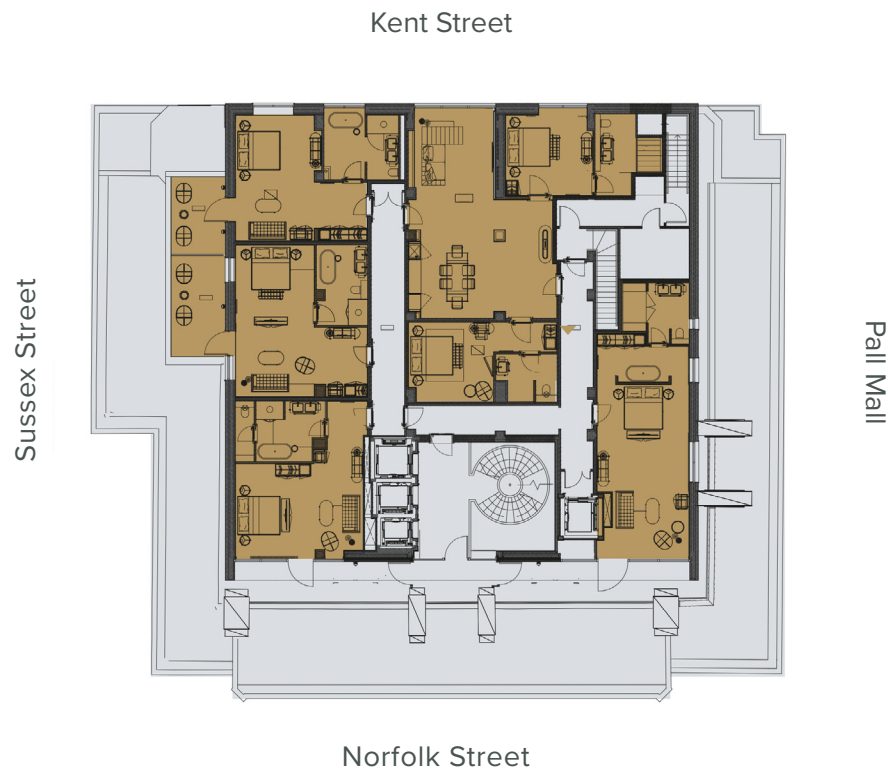
- / Size – 172m²
- / Adjoining Junior Suite available measuring 60 m² with private outdoor terrace (approx. 10 m²)
- / King-Size
- / Separate living area
- / Bar
- / Dressing Room
- / Fitness Area with Treadmill
- / En-suite bathroom with Double vanities
- / Free Standing Bath Tub
- / Steam shower with LED mood lighting
- / Private entrance
- / Dedicated personal concierge on request



FOURTH FLOOR EXCLUSIVITY

The fourth floor comprises of the Goldstone suite, one of our two signature suites, and four Norfolk Collection suites. The Goldstone is the only suite in the hotel to contain two bedrooms and other features include en-suite bathrooms, separate lounge space, kitchenette and dining area. Each of our Norfolk suites include their own outdoor terrace area, a free standing bathtub and rain effect shower.

With the capacity to accommodate up to 12 guests, this is the ideal space for large families and VIP groups seeking an exclusive, luxury experience.



FOURTH FLOOR EXCLUSIVITY

The fourth floor comprises of the Goldstone suite, one of our two signature suites, and four Norfolk Collection suites. The Goldstone is the only suite in the hotel to contain two bedrooms and other features include en-suite bathrooms, separate lounge space, kitchenette and dining area. Each of our Norfolk suites include their own outdoor terrace area, a free standing bathtub and rain effect shower.

With the capacity to accommodate up to 12 guests, this is the ideal space for large families and VIP groups seeking an exclusive, luxury experience.

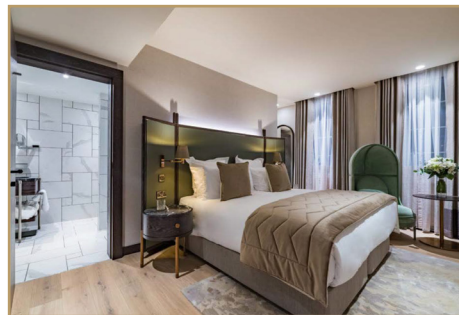


ROOMS AND SUITES



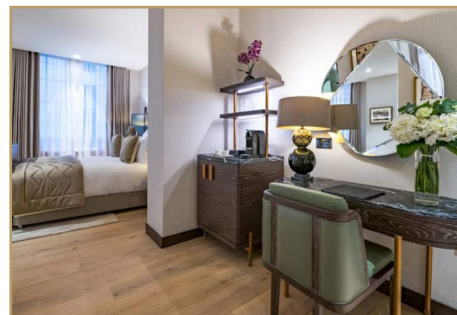
THE JOHN GASS COLLECTION

Our John Gass collection offer up to 25 square metres of space.



THE ARTHUR HOPE COLLECTION

Our Arthur Hope Collection offers up to 35 square metres.



THE BRADSHAW COLLECTION

Bradshaw Collection rooms offer up to 42 square metres of space along with a free-standing bath tub.



THE NORFOLK SUITE COLLECTION

The Norfolk Suite Collection offers spacious and well-appointed 55 square metres of substance and style with a separate seating area to work or relax complemented by a private outdoor terrace.



PRIVATE DINING

We have the perfect space for you.
Whatever the occasion we have a beautiful selection of event spaces to suite all needs.

The Stock Exchange Hotel in Manchester offers four exquisite event spaces, each embodying flexibility and beauty. These versatile venues provide the perfect setting for a range of occasions. Whether you're hosting an intimate gathering or a grand affair, the hotel offers a captivating ambiance that blends historical charm with contemporary elegance.

tender by Niall Keating

Seated up to 110 guests for a formal dinner, 300
for an informal event

The Bank

For the ultimate private dining experience



CONTACT

Matthew Miller - Director of Sales and Marketing

matthew.miller@stockexchangehotel.co.uk

Stock Exchange Hotel

+44 161 470 3901

4 Norfolk Street, Manchester, M2 1DW

events@stockexchangehotel.co.uk

www.stockexchangehotel.co.uk

Instagram/TikTok

@stockexhotel

Twitter

@StockExHotel



AUTOGRAPH COLLECTIONSM

Stock Exchange Hotel, part of the prestigious Autograph Collection Hotels, part of Marriott Bonvoy's esteemed portfolio.

This partnership marks a new chapter for our award-winning property and an opportunity to bring even more extraordinary experiences to our cherished guests.